


RENOVATIONS

INTERIORS // ARCHITECTURE // FASHION // ART // DESIGN

Gray

PACIFIC NORTHWEST DESIGN

Nº 42: OCT. / NOV. 2018



Young guns,
historic renos,
killer interiors.

This changes
everything.

THIS CHANGES EVERYTHING

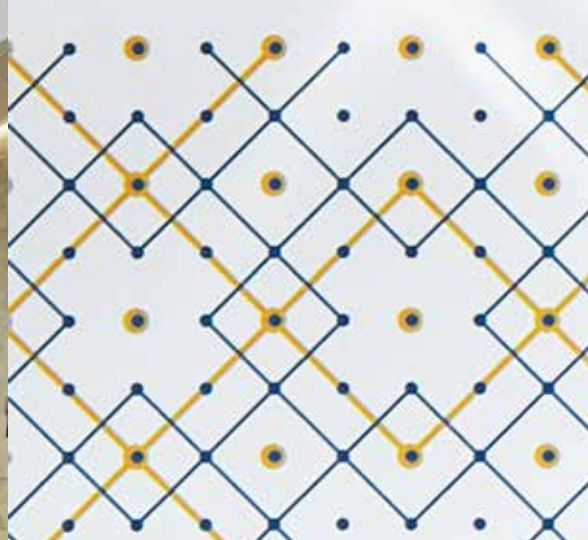
NEWS

Written by CLAIRE BUTWINICK & KATY TOTAH



SALLY PAINTER PHOTOGRAPHY/ESI DESIGN





POWER PLAY

Once Portland's main power station, the newly renovated and renamed **Power + Light building** is now a modern workplace that boasts a spot on the National Register of Historic Places. Striving to preserve the building's unique history during the remodel, New York City-based experience design studio **ESI Design** deployed a clever (but powerful) motif throughout the building's interior: a pattern of connected electrical circuits appears on custom-designed carpets, light fixtures, and railings, as well as accent walls and wayfinding. At 265,000 square feet, the building offers plenty of office space, and tenants will have access to a conference center, fitness center, contemporary lounge, and large rooftop deck.



DIPLOMATIC DESIGN

The new Mexican consulate in Seattle—which opened its doors in July in the former Harvard Exit Theatre on Capitol Hill—presents a new take on a venerable classic. After its purchase by **Eagle Rock Ventures** in 2015, the 93-year-old structure underwent an extensive transformation at the hands of **SHW Architects** and **Dovetail General Contractors**. The firm not only reconstructed the building from the inside out, but also uncovered and reinstalled the previously boarded-up 10-foot-tall windows, installed an elevator, and turned a third-floor ballroom into office space. The team also incorporated interior glass partitions and several refurbished chandeliers, retaining touches of the building's civic history. »

CLOCKWISE FROM TOP: LEFT: SALLY PAINTER PHOTOGRAPHY/ESI DESIGN; JILL HARDY; COURTESY DOVETAIL GENERAL CONTRACTORS